



SYSTECH J.Schnyder GmbH

Schliefweg 30
CH-4106 Therwil
Telefon 091 827 15 87
www.systech-gmbh.ch

IREGLER-Z

Beschrieb V 0.5 (Entwurf/Draft/Bozza)

Konstantstrom-Quelle für Power LED's
Constant Current Source for Power LED's
Sorgente di Corrente Costante per Power LED's

Inhalt / Contents / Contenuto

Shortform.....	2
Beschrieb / Description / Descrizione.....	2
Technische Daten / Electrical Characteristics / Dati tecnici.....	2
Steckerbelegung / Pinout / Connessioni.....	3
LED's.....	3
Power.....	3
Bestückungsplan / Component Placing / Pinao di montaggio.....	3
Stückliste / BOM / Elenco componenti.....	4
Schema / Schematics / Schema.....	5
Print / PCB / Scheda.....	6
Anhang / Appendix / Appendice.....	7
Links.....	8

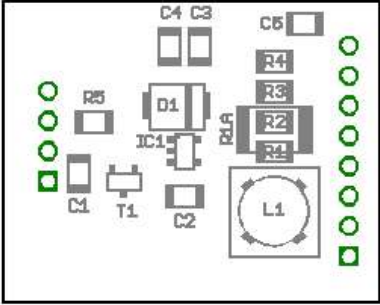
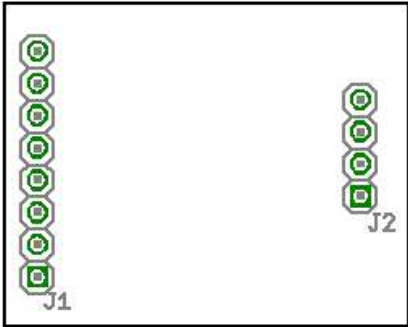
Shortform



SYSTECH J.Schnyder GmbH

www.systemech-gmbh.ch

IREGLER-Z Constant Current Source for 1W Power LED's

 <p>Top</p>	 <p>Bottom</p>
<ul style="list-style-type: none"> - Input Voltage 10-30V DC - Output current up to 300mA(1350) resp. 1A(1360) - for 1 to 6 LED's (up to 4 directly on J1) 	
<p>Dimension: 32mm x 26mm</p>	
<p>J2 Power J1 LED connector (up to 4)</p>	
<p style="text-align: right;">Version 1.1</p>	

Beschrieb / Description / Descrizione

Am IREGLER-Z-Modul können je nach Betriebs-Spannung bis zu sechs Power-LED's angeschlossen werden.

Depending on the supply voltage, the IREGLER-Z can drive up to six power LED's.

Il dispositivo IREGLER-Z è capace in dipendenza alla alimentazione di alimentare fino a sei power LED's

Technische Daten / Electrical Characteristics / Dati tecnici

Steckerbelegung / Pinout / Conessioni

LED's

J1

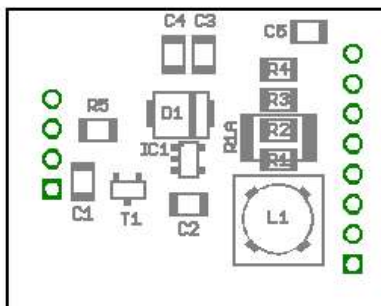
1	+LED1 (+LED)
2	-LED1
3	+LED2
4	-LED2
5	+LED3
6	-LED3
7	+LED4
8	-LED4 (-LED)

Power

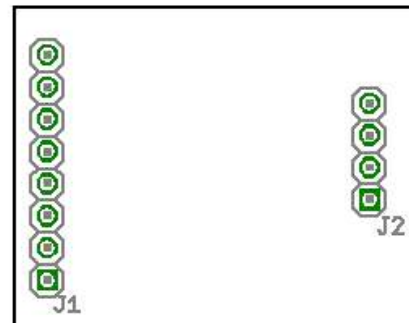
J2

1	+U
2	MOD
3	GND
4	NC

Bestückungsplan / Component Placing / Pinao di montaggio



Top

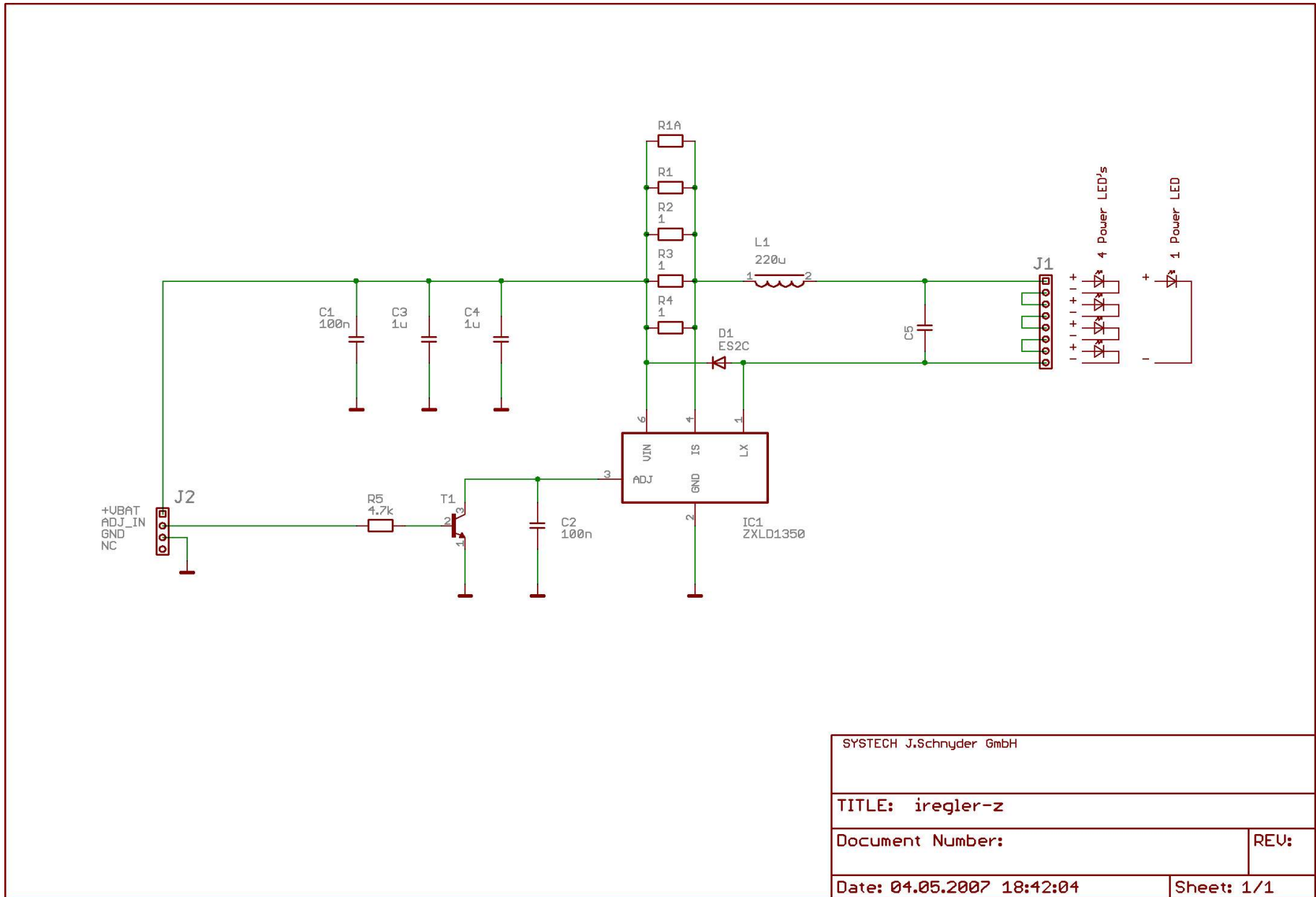


Bottom

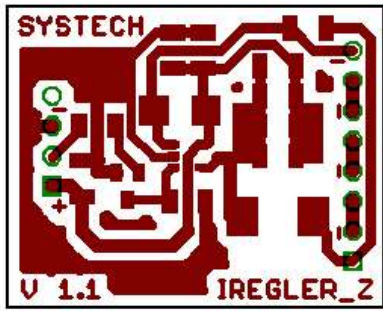
Stückliste / BOM / Elenco componenti

Name		Value	Case	Distrelec	Farnell	Other	Remark
C1	C-1206-100N	100N	C-1206	831546			
C2	C-1206-100N	100N	C-1206	831546			
C3	C-1206-1U	1U	C-1206	830028			
C4	C-1206-1U	1U	C-1206	830028			
C5			C-1206				Option
D1	ES2C		SMB	601714			
IC1	ZXLD1350ET5		STO23/5		1226470		
J1	ST-1X8		ST-1X8	122096/4			1/4 of 122096
J2	ST-1X4		ST-1X4	122096/8			1/8 of 122096
L1	L-DR73-220U		DR73	350285			
R1	R-1206-1	1	R-1206	711262			
R2	R-1206-1	1	R-1206	711262			
R3	R-1206-1	1	R-1206	711262			
R4			R-1206				Option
R1A			R-2515				Option 1360
R5	R-1206-4K7	4K7	R-1206	715027			
T1	BC847		SOT23	610379			
PCB	IREGLER-Z-PCB					SYSTECH	

Schema / Schematics / Schema



SYSTECH J.Schnyder GmbH	
TITLE: iregler-z	
Document Number:	REV:
Date: 04.05.2007 18:42:04	Sheet: 1/1



Top

Anhang / Appendix / Appendice

Formeln zur Schaltung:

Links

System J.Schnyder GmbH

www.system-gmbh.ch

Entwicklung von Hard- und Software, Schulungs-Systeme
Layout-Programme

Elektor

Elektronik die begeistert

www.elektor.de

Distrelec

Bauteile und mehr

www.distrelec.com

ZETEX

www.zetex.com